

TEFC Vertical Fire Pump Motors

AVAILABLE WITH HOLLOW SHAFT

Horsepower	7.5-300 hp
Speeds	2- and 4-Pole @ 50Hz, 4 Pole at 60Hz
Design Voltages	Three Phase/380/400/415 @ 50Hz, 230/460 @ 60Hz
Enclosures	TEFC
Efficiency Levels	NEMA Premium and High

Reliability You Can Count On

The Aurora Vertical TEFC Fire Pump Motor line extends our leading-edge vertical motor technology to fire protection. Our robust, UL-certified fire pump motors meet the industry's demanding safety requirements, including NFPA20. Built from the highest-quality materials, they perform under the most strenuous and extreme conditions at the highest efficiency levels, guaranteeing they are ready to go when needed. Innovation and quality remain among our top priorities, and this investment to broaden our vertical motor offerings is the latest in that critical endeavor. With a depth and breadth of experience and commitment to precise engineering, we can tailor our fire pump motors to your specifications.

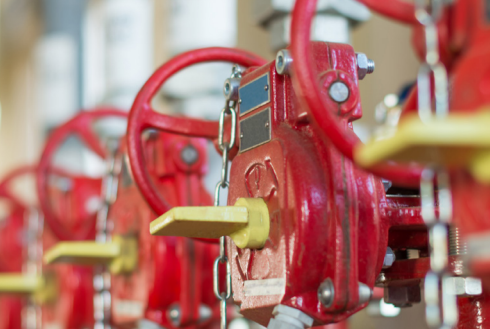
External Product Features

- All cast-iron frames from 213TP to 449TP
- Oversized and cast-iron conduit boxes up to 449TP frames
- Cast-iron top cover up to 30 hp
- Steel top covers, 40 hp to 300 hp
- Enclosure type includes IP44-IP55

Internal Product Features

- Ball-type non-reverse ratchet
- Space heaters and thermistors
- Die-cast aluminum rotor
- Class F temp rise at 1.15 S.F.
- Class "F" insulation
- Double VPI and tropicalization treatment
- P5 angular contact bearings





Durable Fire Pump Motors from 7.5 hp to 300 hp

Our vertical hollow-shaft motors make up the most complete product family for the fire protection industry, with UL-certified models from 7.5 hp to 300 hp.

NEMA Premium efficiency Aurora Vertical Fire Pump Motors run quietly with low starting torque, high-breakdown torque, low vibration, and low temperature rise. They meet UL requirements in open, drip-proof and TFEC enclosures designed for numerous environments. You can rely on our high-end motors to provide long-lasting, trouble-free service under arduous conditions.

STANDARD FEATURES

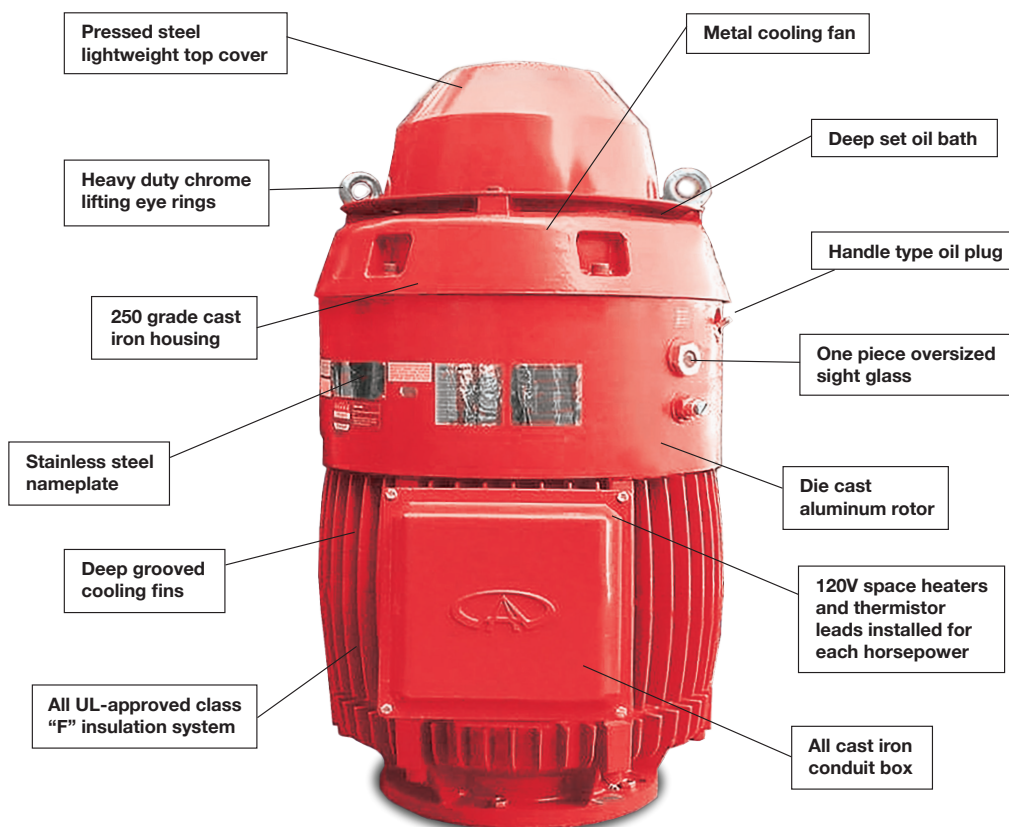
- Non-reverse ratchet
- Standard-sized couplings
- Thermistors
- Space heaters
- Steady bushings (upon request)

MOTOR OPTIONS

- Alternate bases
- Alternate couplings
- TEFC enclosure IP44-IP55
- 2- and 4-Pole
- Extra high thrust bearings
- Cast iron top hat available
- 50Hz and 60Hz available

AURORA PREMIUM FEATURES

- P5 (aviation grade) angular contact thrust bearing
- Double VPI winding treatment (all horsepower)
- End turns capable of 2300V peak-to-peak tropicalization



Quality Construction

- UL Listed for fire protection
- UL Approved insulation system (NEMA MG-1 Part 31 Inverter Duty)
- Non-Hygroscopic epoxy varnish

Superior Durability

- Cast-iron construction
- Durable metal top cover
- Oversized conduit box
- Precision vibration tolerance as low as .02 velocity (IPS – Peak)

Built-In Protection

- Positive Temperature Coefficient thermistors
- Space heaters
- Ball-type non-reverse ratchet
- Insulated Upper Thrust Bearings (an option)